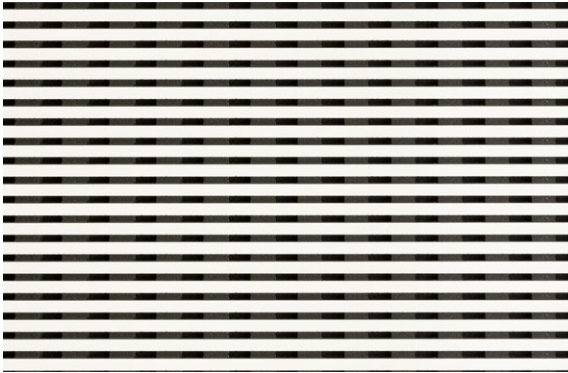
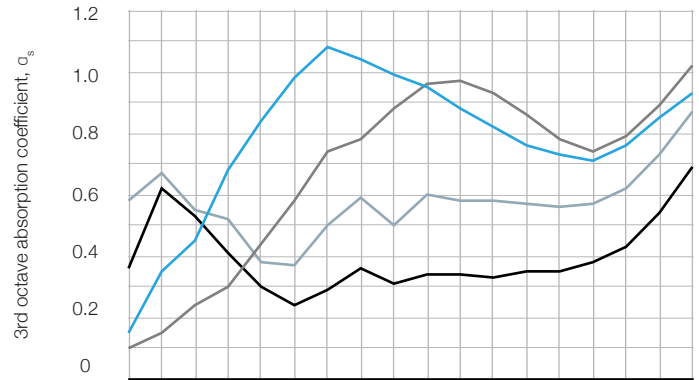


Groove 5 datasheet

3mm slot width, 5mm slat width



Absorption data for Groove 5 (EN 354: 2003)



Groove 5 acoustic performance	α_w	Class	125Hz	250Hz	500Hz	1kHz	2kHz	4kHz
70mm cavity including 50mm 40kg mineral fibre	0,85 LMH	B	0,30	0,85	1,00	0,90	0,75	0,85
20mm cavity including 20mm Polyester wool	0,75 H	C	0,15	0,45	0,80	0,95	0,80	0,90
Empty: Cupboard door with 500mm cavity	0,35	D	0,50	0,30	0,30	0,35	0,35	0,55
Filled: As above with 20mm Polyester wool	0,60	C	0,60	0,40	0,55	0,60	0,55	0,75

Specification checklist

Fire performance	Euroclass B-s1-d0 components when specified
Standard Measurements	3030 x 192 mm (tongue and groove HPL) 3030 x 128 mm (tongue and groove veneer) Acoustic cupboard doors - made to measure
Thickness	19mm veneer / 20mm HPL
Weight	10.5kg/m ²
Core	Black moisture resistant MDF/Black fire retardant MDF (normal MDF on request)
Can be applied to curved surfaces	Yes, T&G panel available as well as flexible sheets
Finishes	HPL - 0.9mm with Over 500 options available. Veneer finishes with lacquer or oil
Can be cut on site	Yes
Clear lacquer sheen levels (veneer)	10% for fire retardant lacquer. Oil very matt
Wall mouting	Softwood battens at 600mm centres. Black pins fired through grooves.
Ceiling mounting	MF system with MDF strips. Black pins fired through grooves.
Panel backing	Black fleece tissue inside the panel and balance HPL / veneer.
Sustainability	FSC accredited on request
Trims , doors and finishing details available	Matching internal door covers, acoustic doors, edgings, skirting and returns on request